



Annual Report Submitted to the Governor

2016
—
2017

**Pennsylvania State Interagency Coordinating
Council (SICC) for Early Intervention**

The Pennsylvania Office of Child Development and Early Learning administers the Early Intervention program in Pennsylvania.

Vision Statement

The Pennsylvania Office of Child Development and Early Learning supports families and their children, from prenatal through school age, by using data, research, and stakeholder guidance to assure high-quality services.

Mission Statement

The Pennsylvania Office of Child Development and Early Learning provides families access to high-quality services to prepare children for school and life success.

Message From the Chair of the State Interagency Coordinating Council

Dear Governor Wolf,

As a Co-Chair of the State Interagency Coordinating Council (SICC) for Early Intervention, and a proud mom of Alex, a graduate of Early Intervention, I would like to thank you sincerely for your unfaltering leadership in support of Early Intervention. This program dramatically and positively impacted Alex and our entire family. Through a collaborative approach involving us, as parents, and professionals working with Alex, his development and learning was enhanced, placing him on a life path that realized his potential as a participating and contributing member of society.



Right now, every time I look at Alex who is FULLY included in his general education fourth grade class, I can see he is making friends, learning about everything from personification to photosynthesis, and just having fun like any other kid. I realize these achievements would not have been possible without Early Intervention. I can now imagine Alex growing up, going to college, obtaining a job, and getting married. I would not have these dreams without our start in Early Intervention.

Pennsylvania has over 90,000 babies and children receiving the Early Intervention services. Each one of these infants, toddlers, and preschoolers have the ability to learn, grow, and achieve and to be successful in accomplishing life goals. Early Intervention is our best investment and strongest course in ensuring that limitations become possibilities.

Through your governorship and support of Early Intervention, Pennsylvanians can continue to take pride in our commonwealth as a champion of early learning.

Sincerely,

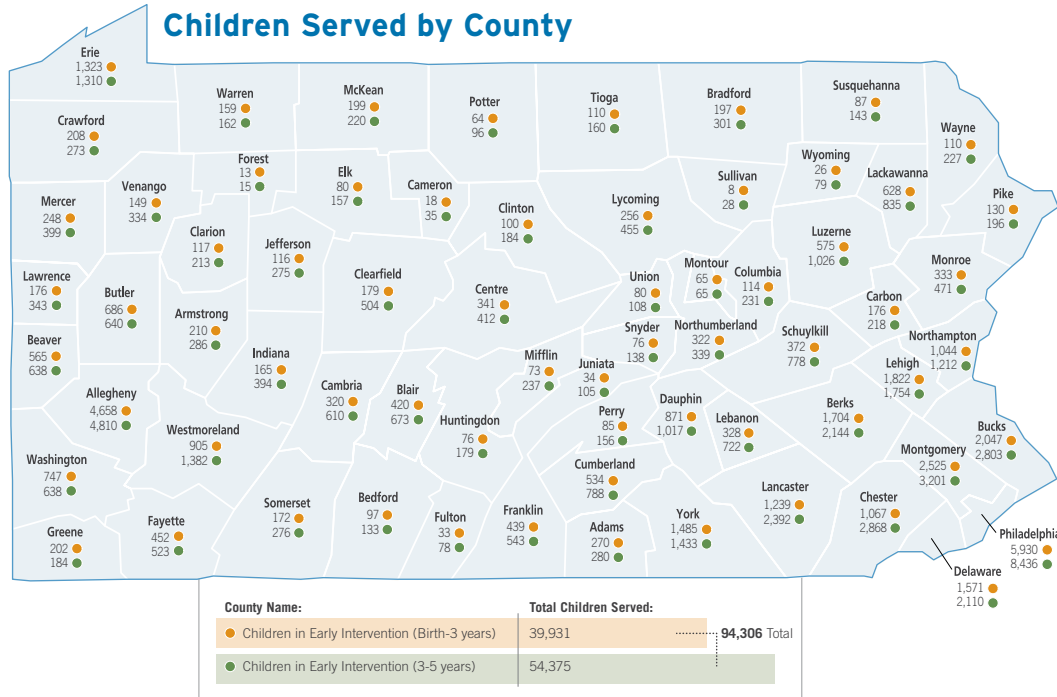
Cecilia Lee

Parent and State Interagency Coordinating Council Co-Chair

Early Intervention in Pennsylvania

Early Intervention in Pennsylvania consists of services and supports designed to help families with children who have developmental disabilities or delays. Children ages 0-5 who have been found eligible are supported in their home, community, and preschool, to the maximum extent possible.

Below are the number of children found eligible in the fiscal year 2016-2017.



The resources and support from Early Intervention have been invaluable to us. Not only for Emeric's developmental progress, but also our own development as parents of a child with a disability. The therapists have been so effective and patient in teaching us the skills we need to help Emeric succeed and very eager to learn about our family and his disability. We will always be grateful.

**Mallary Underwood,
Cumberland County**



Our Abby is blossoming into a social, fun-loving, expressive little girl. We once weren't sure if that was possible, but Early Intervention provided us with the tools we needed to help her unlock some of her puzzles. They also empowered us as parents to be her first teacher. We will be eternally grateful for them setting Abby on a path for academic and social success.

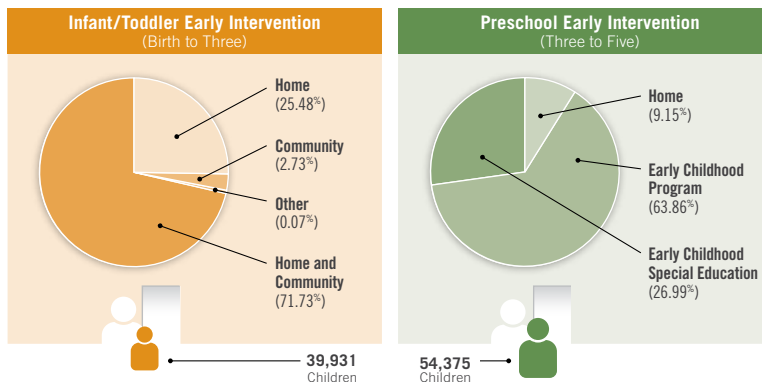
**Naomi Galman,
Beaver County**

Early Intervention Supports and Services

Early Intervention supports and services are embedded within learning opportunities that exist in the child's typical routines, within the home and community and/or early education programs.

Early childhood inclusion embodies the values, policies, and practices that support the participation of every infant and young child, regardless of ability, in a broad range of activities and contexts as full members of families, communities, and society.

Location Where Services are Provided

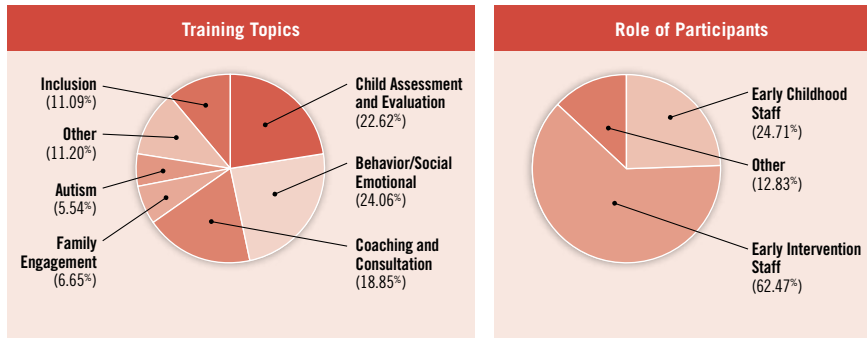


Note:
Home and community means that the majority of the services are in a combination of home and community settings.

Early Intervention Technical Assistance

Technical assistance is provided to Early Childhood and Early Intervention Programs staff to help them develop skills to work collaboratively with families, caregivers, and educators to help children learn and grow. Approximately 3,056* individuals participated in a variety of training activities in 2016-2017. The cumulative reach of this technical assistance is highlighted below by the number of topics addressed during trainings and the roles of the individuals trained.

Training Topics and Participant Roles



Note:

*This number is a duplicative number and some individuals may have participated in more than one training event.



With the support of Early Intervention, Ethan is learning alongside his typical developing peers in a community preschool setting. The appropriate specially designed instruction and support taking place in the classroom has enabled him to learn academically, socially, and behaviorally. We have seen how this approach has benefited not only our son but also his entire classroom.

**Grace Kim McIntosh,
Montgomery County**

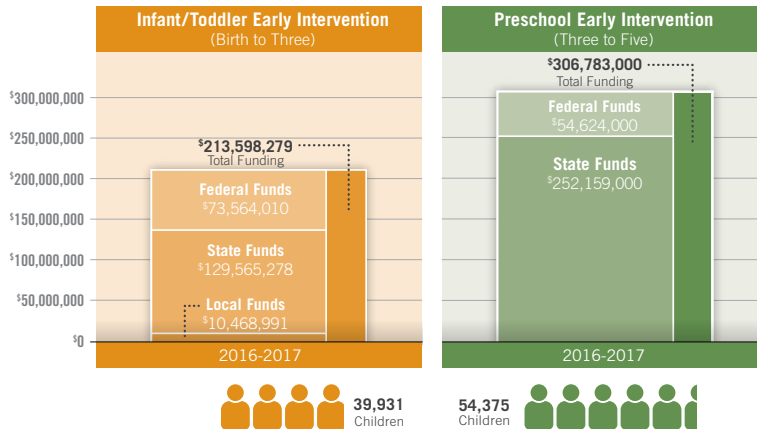
Realizing your child is not developing typically is scary. I expected Early Intervention services to be about a professional working with my son to help him reach his milestones. Instead, I have gained knowledge and skills to promote his development. Finding ways that work for us has made this process comfortable and fun and therefore my son is making progress.

**Shauna Allison,
Luzerne County**

Funding for Early Intervention Services

Funding for Early Intervention services and supports is derived from a variety of sources, including federal, state, and local funds. Pennsylvania's commitment to Early Intervention is evidenced by its ongoing support of funding for services for children and families.

Early Intervention Funding Allocations



Note:

Federal funds include Individuals With Disabilities Education Act (IDEA) and Medical Assistance funds.

Our Early Intervention Preschool Program knows that Early Intervention saves future costs. For example, services to one child prior to school age totaled less than \$18,000, but resulted in the same child needing minimal special education in first grade. If intervention were delayed, over the elementary years it could have cost up to \$100,000. – Lancaster-Lebanon Intermediate Unit 13

State Interagency Coordinating Council Members

Mr. Carl Beck

*Director
Bureau of Early Intervention Services
Office of Child Development and Early Learning*

Mr. Michael Cortez

*Executive Director
Senate Health and Human Service Committee*

Ms. Judith deChamplain

*Department of Human Services
Office of Children's Health Insurance Program (CHIP)*

Ms. Sandi Dinardi

Tuscarora IU 11

Ms. Cindy Dundas

*Director, Division of Community Systems Development & Outreach
Bureau of Family Health
Department of Health*

Ms. Amanda Glickman

*Department of Human Services
Office of Policy Development*

Ms. Carolyn Green

*Department of Human Services
Office of Legislative Affairs*

Ms. Jill Hrinda-Patten

Parent Representative

Ms. Shirley Keith Knox, LSW, MSW

*Deputy Administrator, MH/ID Services
Dauphin County MH/ID Program*

Mr. Kurt Kondrich

Parent Representative

Ms. Cecilia Lee (Co-Chair)

Parent Representative

Ms. Kate McKinnon (Co-Chair)

Pennsylvania State University

Ms. Carmen Medina

Pennsylvania's Education for Children and Youth Experiencing Homelessness Program

Pennsylvania Department of Education

Ms. Suzann Morris

*Deputy Secretary
Office of Child Development and Early Learning*

Ms. Deborah Shemansky

Hazleton School District

Ms. Bridgette Vogel song

Parent Representative

Dr. Todd Wolynn

American Academy of Pediatrics

Through Early Intervention our family has become the catalyst for our son's growth and development. The program has helped us recognize the value of the activities we already engaged him in and has taught us new skills to help him succeed.

**Erin Murray,
Luzerne County**

The SICC is a Governor-appointed council that advises and assists the Departments of Education and Human Services. It ensures that a comprehensive system of integrated Early Intervention programs and services is available in Pennsylvania to all eligible infants, toddlers, and young children and their families. The SICC vision for Early Intervention is a system that supports, not supplants, the family's responsibility of caring for their children and supports all children as active participants in the community as children first, not disability first, with attention to necessary adaptations. The SICC supports the concept of inclusion for all children.



Our son started in Early Intervention when he was a year old, due to gross motor delays. His Early Intervention therapists were there for us when we were given his diagnosis and we have the Early Intervention team to thank for giving us the resources and knowledge to support our child and to help him learn and grow.

Nicole Whitmire, Cumberland County



Commonwealth of Pennsylvania
Tom Wolf
Governor