



**Pennsylvania
State Interagency
Coordinating
Council (SICC) for
Early Intervention**

2017 – 2018

**Annual Report
Submitted to
the Governor**

The Pennsylvania Office of Child Development and Early Learning administers the Early Intervention program in Pennsylvania.

Vision Statement

The Pennsylvania Office of Child Development and Early Learning supports families and their children, from prenatal through school age, by using data, research, and stakeholder guidance to assure high-quality services.

Mission Statement

The Pennsylvania Office of Child Development and Early Learning provides families access to high-quality services to prepare children for school and life success.

Message From the Co-Chair of the State Interagency Coordinating Council

Dear Governor Wolf,

As a co-chair of the State Interagency Coordinating Council (SICC) for Early Intervention, I would like to express my utmost gratitude to you for your unwavering commitment to strengthening early learning opportunities for ALL kids. I also wanted to applaud you on your strong belief in inclusion of kids with disabilities. As a mother of a middle school child who had amazing supports and services through Early Intervention from birth to kindergarten, I was able to fully witness the effectiveness of this wonderful program in getting my son, Alex, ready for school.

The social benefit that Alex has achieved through inclusive education is the most astounding benefit of all. Alex has been 100% included since preschool – attending our neighborhood preschool and elementary school, making friends and learning alongside his peers. Some of the same friends from preschool and elementary school still come over to hang out with Alex. Over the years, they have learned a great deal about kindness and empathy and have developed an enthusiastic willingness to help whomever and whenever. They have welcomed Alex in their class as a friend and as a fellow student. These peer interactions perfectly exemplify that inclusion benefits ALL kids. In fact, we have recently learned that one of Alex's best friends never even told his parents that Alex has Down syndrome. He just didn't think it mattered!

Through your incredible support for early learning and inclusion of ALL kids, so many families have seen their kids thrive beyond expectations and develop into responsible, contributing members of their communities.

Sincerely,

Cecilia Lee

Parent and State Interagency Coordinating Council Co-Chair

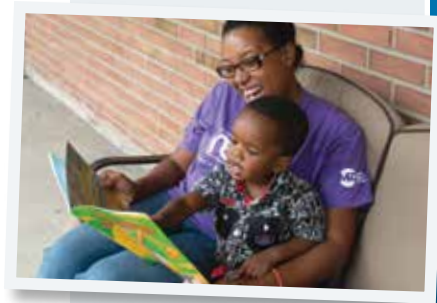


Charlie Wildey and Alex Lee,
Montgomery County

Early Intervention in Pennsylvania

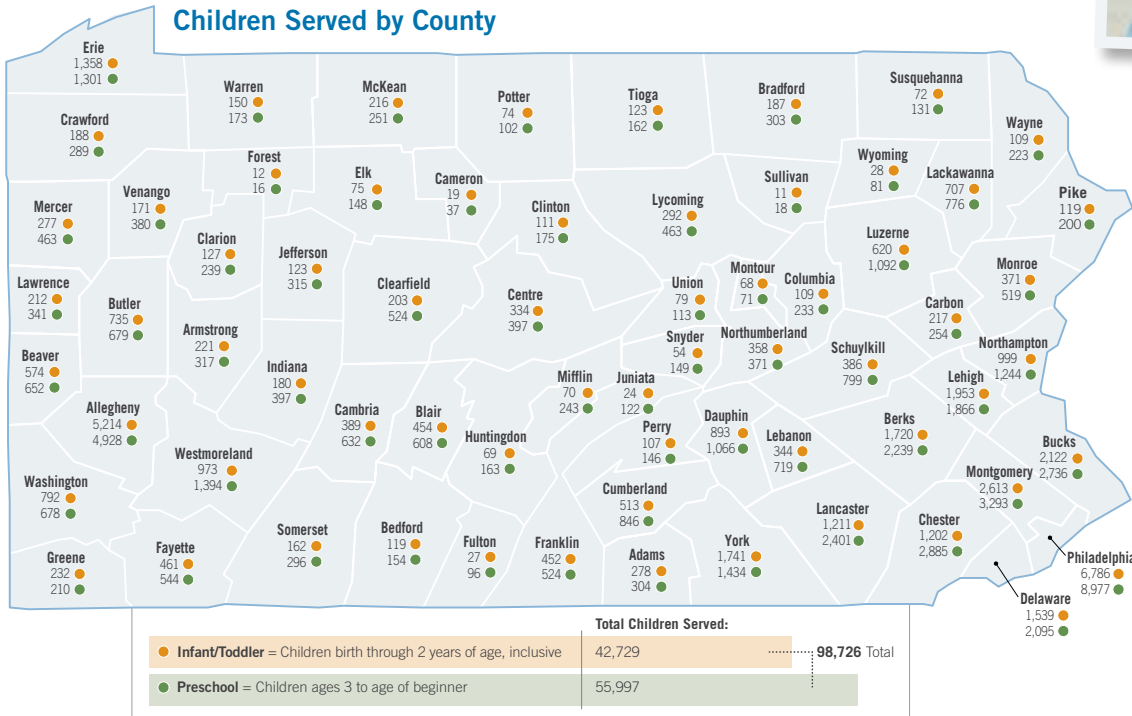
Early Intervention in Pennsylvania consists of services and supports designed to help families with children who have developmental disabilities or delays. Children ages birth through age 5 who have been found eligible are supported in their natural learning environment to the maximum extent possible.

Below are the number of children found eligible in the fiscal year 2017-2018.



Early Intervention has helped me to communicate with my son. My son wasn't able to tell me what he wanted in a way that I thought he should be able. Early Intervention came into my home, evaluated him, and put me with the best speech therapist in the world. She supported me to help him at snack time and playtime. Services for Koree fit into our everyday activities.

**Trisha Tabron,
Luzerne County**





Early Intervention has provided my family with the skills and knowledge needed to help our hard of hearing daughter learn to listen and talk. Thanks to Early Intervention, Tenley is developmentally on track and well on her way to being mainstreamed into a general education preschool classroom.

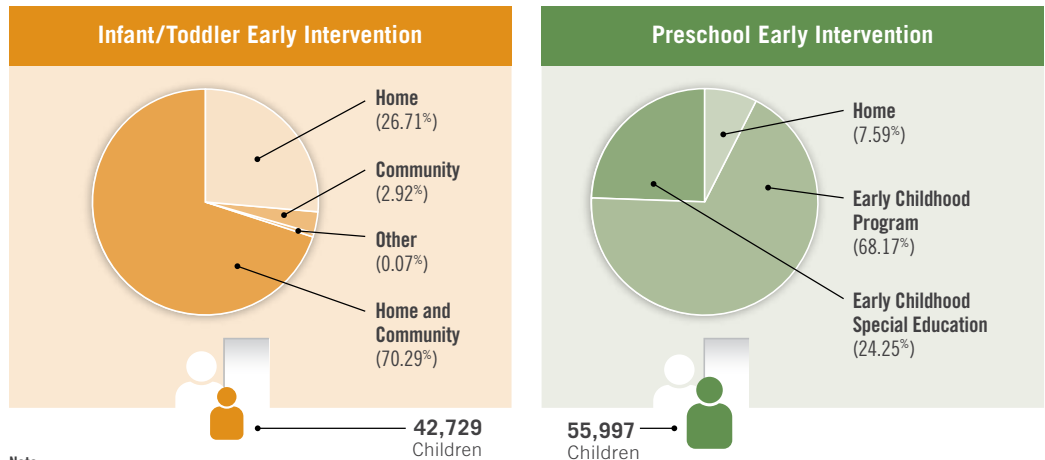
Taryn Amlo,
Montgomery County

Early Intervention Supports and Services

Early Intervention supports and services are embedded within learning opportunities that exist in the child's typical routines, within the home and community activities and/or early education programs.

Early childhood inclusion embodies the values, policies, and practices that support the right of every infant and young child, regardless of ability, and his or her family, to participate in a broad range of activities and contexts as full members of families, communities, and society.

Location Where Services are Provided



Note:

Home and community means that the majority of the services are in a combination of home and community settings.

Infant/Toddler = Children birth through 2 years of age, inclusive

Preschool = Children ages 3 to age of beginner

Family Engagement

Engaging families has been the key to a successful Early Intervention system in Pennsylvania. Through the SICC and the Local Interagency Coordinating Councils (LICCs), families can have an impact on Early Intervention policy and procedures, as well as service planning for their children. In addition, other opportunities, such as Competence and Confidence Partners in Policymaking for Families of Children in Early Intervention (C2P2EI) and Parents as Partners in Professional Development (P3D), are offered for leadership development. C2P2EI helps families develop leadership and advocacy skills. P3D helps infuse family voices in training and technical assistance provided across the state, helping professionals have greater awareness of their impact.



SICC Meeting: Carl Beck, Director, Bureau of Early Intervention Services and Family Supports; Mallary Underwood, P3D; Cecilia Lee, SICC Co-Chair; Kate McKinnon, SICC Co-Chair



P3D family presenters at the National Autism Conference



The Early Intervention team are angels in our lives guiding us along this difficult path and bringing us hope, joy and success. At 18 months when we started with Early Intervention, not only did they help Ehlaam develop the skills she needed and reach her milestones, but they also helped us as parents of a child with a disability to accept and understand the diagnosis and provided us with resources, knowledge, and skills to help her learn and grow.

**Sadia Batool,
Lancaster County**

Funding for Early Intervention Services

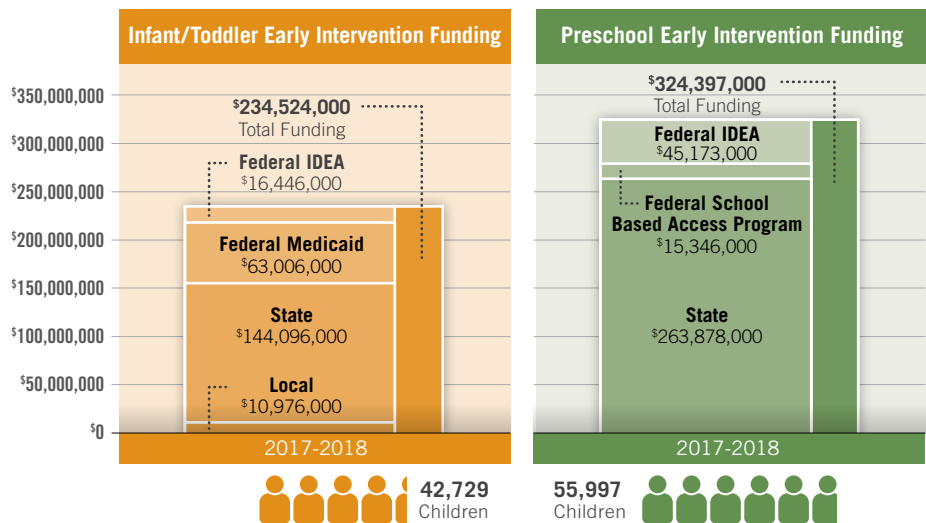
Funding for Early Intervention services and supports is derived from a variety of sources, including federal, state, and local funds. Pennsylvania's commitment to Early Intervention is evidenced by its ongoing support of funding for services for children and families.



Our son Liam was born 14 weeks early. Early Intervention came into our family's life when he was having challenges in his local community preschool. The team listened to my concerns, valued my thoughts and ideas, and worked together with me to ensure the best outcome. Liam is healthy, happy, and thriving because of the supports and services provided through Early Intervention!

Stacy Barno,
Chester County

Early Intervention Funding Allocations



Note:

Federal funds include Individuals With Disabilities Education Act (IDEA) and Medical Assistance funds.

Infant/Toddler = Children birth through 2 years of age, inclusive

Preschool = Children ages 3 to age of beginner

State Interagency Coordinating Council Members

Mr. Carl Beck

*Director
Bureau of Early Intervention Services
and Family Supports;
Office of Child Development and
Early Learning*

Ms. Kristin Bowman

*Executive Director
Education and Development,
REDI Early Intervention Services*

Mr. Michael Cortez

*Executive Director
Senate Health and Human Service
Committee*

Ms. Judith deChamplain

*Department of Human Services
Office of Children's Health Insurance
Program (CHIP)*

Ms. Sandi Dinardi

*Special Education Director
Tuscarora IU 11*

Ms. Cindy Dundas

*Director
Division of Community Systems
Development & Outreach
Bureau of Family Health
Department of Health*

Ms. Aleasha Freeman

*Deputy Administrator
Office of Early Intervention, Delaware
County Department of Human Services*

Ms. Amanda Glickman

*Executive Policy Specialist
Department of Human Services
Office of Policy Development*

Ms. Carolyn Green

*Legislative Specialist
Department of Human Services
Office of Legislative Affairs*

Ms. Jill Hrinda-Patten

Parent Representative

Mr. Kurt Kondrich

Parent Representative

Ms. Cecilia Lee (Co-Chair)

Parent Representative

Ms. Kate McKinnon (Co-Chair)

Pennsylvania State University

Ms. Carmen Medina

*Pennsylvania's Education for Children
and Youth Experiencing Homelessness
Program
Pennsylvania Department of Education*

Ms. Suzann Morris

*Deputy Secretary
Office of Child Development and Early
Learning*

Ms. Deborah Shemansky

*Assistant Director,
Special Education Program
Hazleton School District*

Ms. Bridgette Vogelsong

Parent Representative

Dr. Todd Wolynn

American Academy of Pediatrics



All of the seeds that have become Violet's everyday tools were planted in Early Intervention. Early Intervention helped us to start advocating for Violet early so she had the things she needed to be successful at home and now at school.

**Elizabeth Pantucci,
Luzerne County**

The SICC is a Governor-appointed council that advises and assists the Departments of Education and Human Services. It ensures that a comprehensive system of integrated Early Intervention programs and services is available in Pennsylvania to all eligible infants, toddlers, and young children and their families. The SICC vision for Early Intervention is a system that supports, not supplants, the family's responsibility of caring for their children and supports all children as active participants in the community as children first, not disability first, with attention to necessary adaptations. The SICC supports the concept of inclusion for all children.

