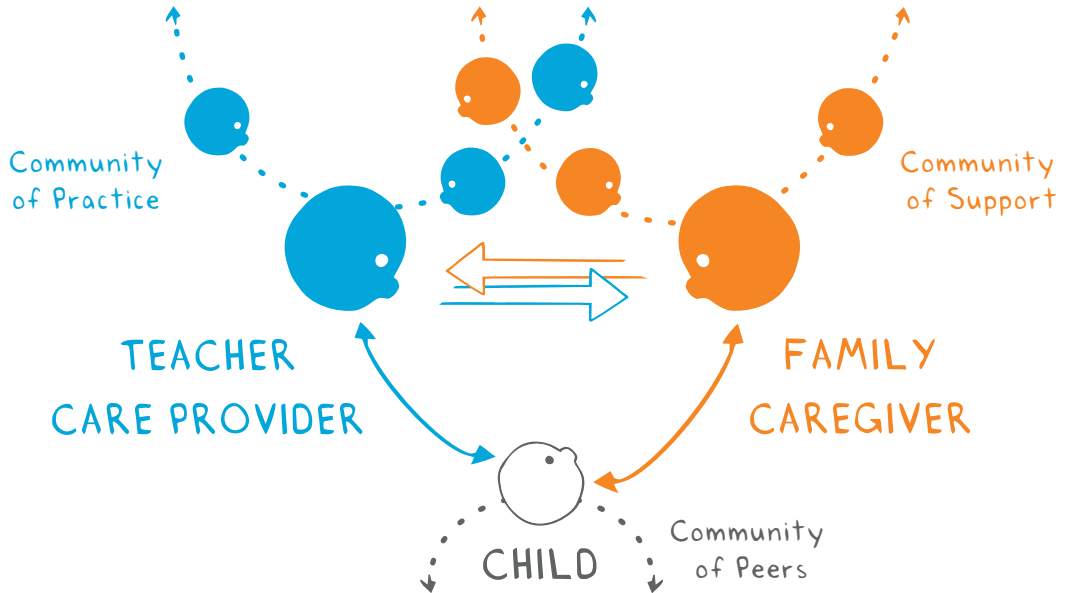


# A THEORY OF CHANGE FOR EARLY LEARNING AND CARE

Encourage, Enrich, and Empower Human Interactions



# ASK THE ESSENTIAL QUESTION

How does this \_\_\_\_\_ help to  
( Practice, Program, Policy )

Encourage, Enrich, and Empower

human relationships around the child?



[www.simpleinteractions.org](http://www.simpleinteractions.org)