

# Pennsylvania State Interagency Coordinating Council (SICC) for Early Intervention

## Annual Report Submitted to the Governor

### Message From the Co-Chair of the State Interagency Coordinating Council

Dear Governor Shapiro,

As a mother of a successful Early Intervention graduate, Parent Co-Chair of the State Interagency Coordinating Council (SICC), and a resident of Pennsylvania, I welcome you and your administration to Office.

It is due to the unwavering dedication and efforts of Early Intervention professionals at the local and state level that Pennsylvania was recognized by the Office of Special Education Programs in 2022 as a State that meets the requirements and purposes of Part C and Part B of the Individuals with Disabilities Education Act. This is reflected in the quality Early Intervention services we families receive in PA.

The SICC looks forward to working under your leadership to ensure that a comprehensive delivery system of integrated Early Intervention programs and services is available to all eligible infants, toddlers, and young children and their families.

**Sadia Batool, Parent Co-Chair SICC**



I can't imagine where we would be without the Early Intervention services that we received. When you have knowledgeable professionals helping with new techniques and ways to help your child attain new skills – it is just invaluable.

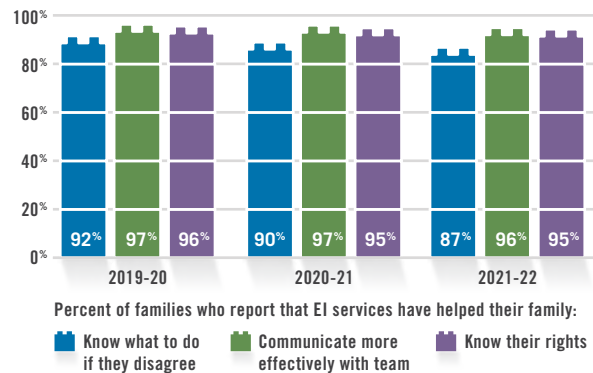
**Bobbi Linskens, Westmoreland County**



Early Intervention helped us navigate through 67 diagnoses and the accompanying medical procedures to provide quality services. The education, hands-on support, and dedicated therapists allowed Evan to gain the skills needed to navigate a typical kindergarten classroom environment with the supports. This is a remarkable accomplishment!

**Anissa Telle, Northampton County**

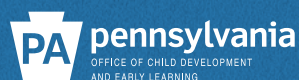
### Family Outcomes



Early Intervention helped my child with her speech. The collaboration and dedication of the professionals made this process a success in spite of COVID challenges. She is now thriving in kindergarten without the need for speech services. Thank you for all that you do.

**Tiffany Thorpe, Delaware County**

The Pennsylvania Office of Child Development and Early Learning administers the Early Intervention program in Pennsylvania.



### Vision Statement

The Pennsylvania Office of Child Development and Early Learning supports families and their children, from prenatal through school age, by using data, research, and stakeholder guidance to assure high-quality services.

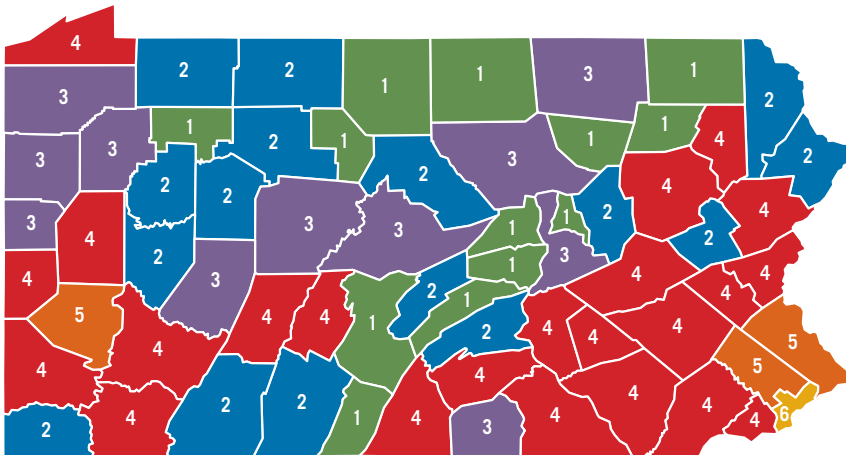
### Mission Statement

The Pennsylvania Office of Child Development and Early Learning provides families with access to high-quality services to prepare children for school and life success.

# Early Intervention in Pennsylvania

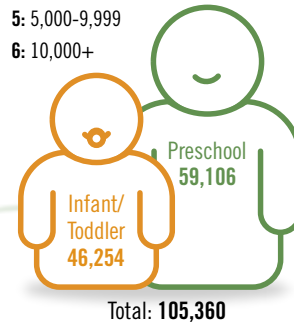
Early Intervention in Pennsylvania consists of services and supports designed to help families with children who have developmental disabilities or delays. Children ages birth to five who have been found eligible are supported in their natural learning environment to the maximum extent possible.

## Children Served by County

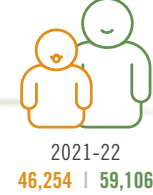


### Children Served in PA: (Ranges)

- 1: 0-249
- 2: 250-499
- 3: 500-999
- 4: 1,000-4,999
- 5: 5,000-9,999
- 6: 10,000+



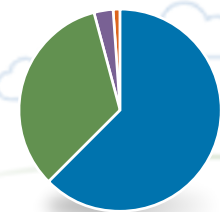
## Number of Children Served



Infant/Toddler  
Preschool

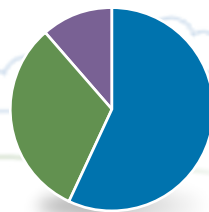
## Location Where Services are Provided

### Infant/Toddler



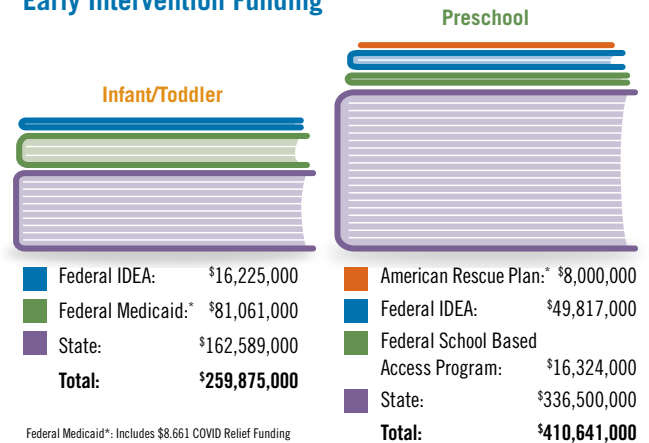
- Home/Community (63.54%)
- Home (34.38%)
- Community (2.04%)
- Other (0.04%)

### Preschool



- Early Childhood Environment (56.99%)
- Specialized Setting (31.63%)
- Home (11.38%)

## Early Intervention Funding



Federal Medicaid\*: Includes \$8.661 COVID Relief Funding

\*\* American Rescue Plan funding is available for expenditures in FFY 2021-22

Note: Infant/Toddler = Children birth through 2 years of age, inclusive. Preschool = Children ages 3 to age of beginner.